



FinTech Group AG

ISIN: DE0005249601
WKN: 524960
Symbol: FLA
Description: FINTECH GROUP AG
Country: Germany
Specialist: ICF BANK AG WERTPAPIERHANDELSBANK
Designated Sponsor: EQUINET BANK AG
 ICF BANK AG WERTPAPIERHANDELSBANK

Transparency Level: Freiverkehr
Xetra Market Segment: Entry Standard (FV)
Trading Model: CONT.TRDG.INCL.IAUCT
Frankfurt Market Segment: Entry Standard (FV X2F)
Trading Model: CONTINUOUS AUCTION BY SPECIALIST

Supersector: FIRE (Financials u. Real Estate)
Sector: Financial services
Subsector: Securities Brokers

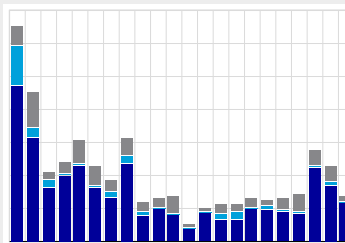
Affiliation Leading Indices: ENTRY STANDARD PERF.IND.
 ENTRY ALL SHARE P-IN.

Price



Last of month	
Xetra	12.64
Frankfurt	12.60
Min	
Xetra	12.28
Frankfurt	12.27
Max	
Xetra	14.25
Frankfurt	14.45

Turnover

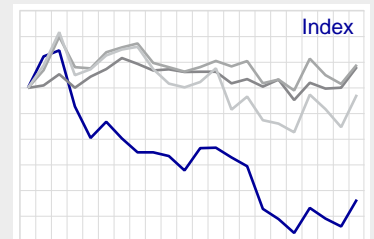


Turnover (€)	
Xetra	3,316,107
Frankfurt	329,761
Other	886,796
Total	4,532,664
Turnover (Units)	
Xetra	248,438
Frankfurt	24,067
Other	66,825
Total	339,330

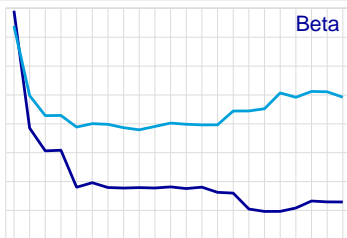
Shareholder Structure

No shareholder data available
(100% free float)

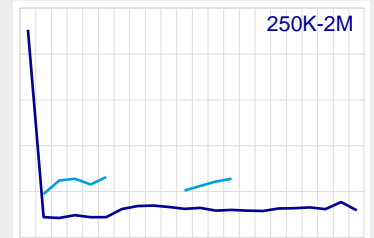
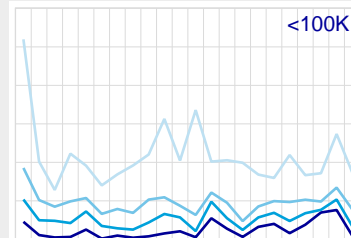
Price Performance Comparisons



Index Affiliation



Liquidity (XLM)



Eurex

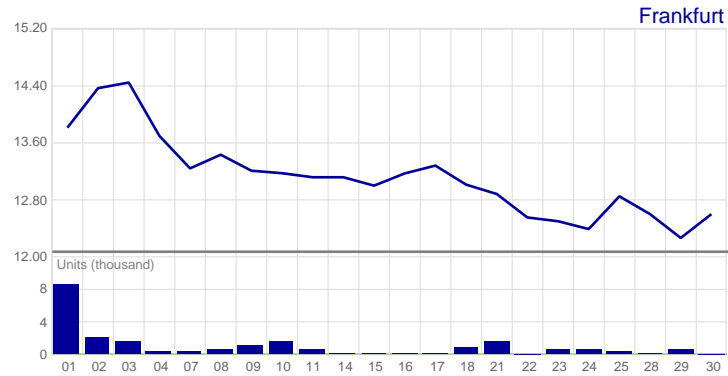
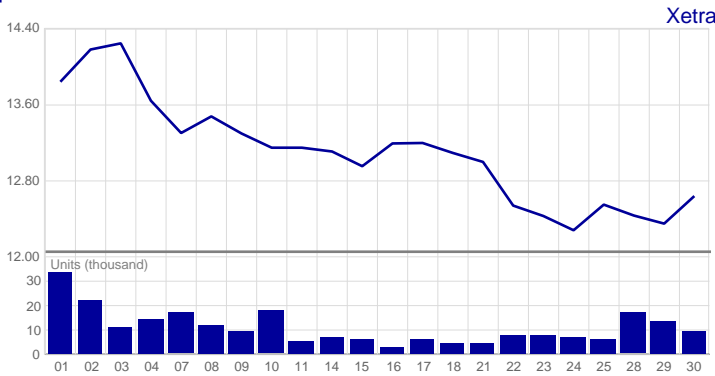
No Eurex derivatives are based on
DE0005249601

Börse Frankfurt Zertifikate Premium

No certificates are based on
DE0005249601



September 2015

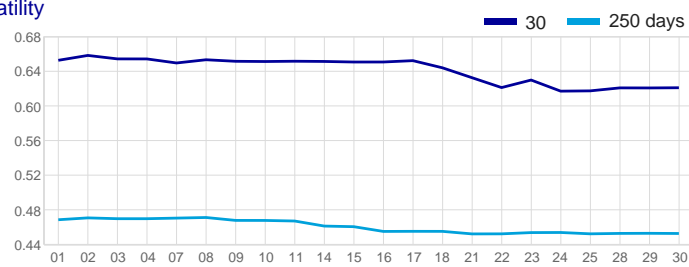


200 days



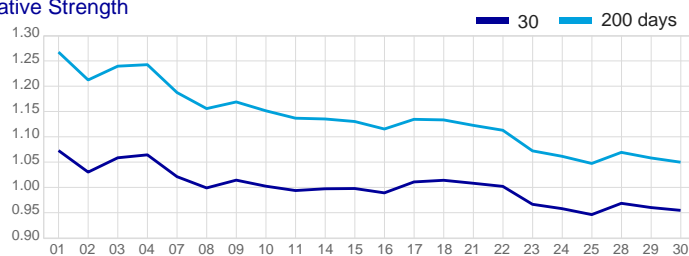
Technical indicators, September 2015

Volatility



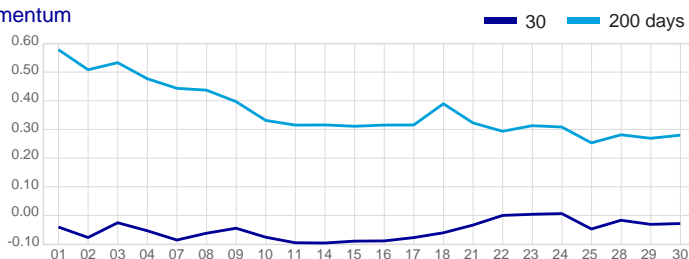
Measure of the extent to which the price of a security or an index fluctuates around a mean value during a fixed period of time. Volatility provides a means of measuring a stock's potential for profit or loss independent of market development. It assumes that past values are an indication of future performance. Because the volatility ratio expresses the extent to which the value of a security can be expected to change in the future, it plays a particularly important role in the calculation of options prices. Volatility is usually calculated for periods of 30 to 250 days.

Relative Strength



The concept of relative strength (RSL) according to Levy is based on the assumption that securities which exhibited a large relative strength in the past will also develop relatively strongly in future, and conversely. Here it is not the relative strengths of several instruments which are compared with each other, but the performance of the past with the performance of today. For the calculation, the closing price of the instrument is divided by the arithmetic mean of the closing prices over the observation period. The result is plotted around the 1.0 mark. If an instrument has an RSL of greater than 1, it exhibits greater price strength today than in the past, whilst if it has a RSL of less than 1, the instrument is tending to greater weakness than in the past.

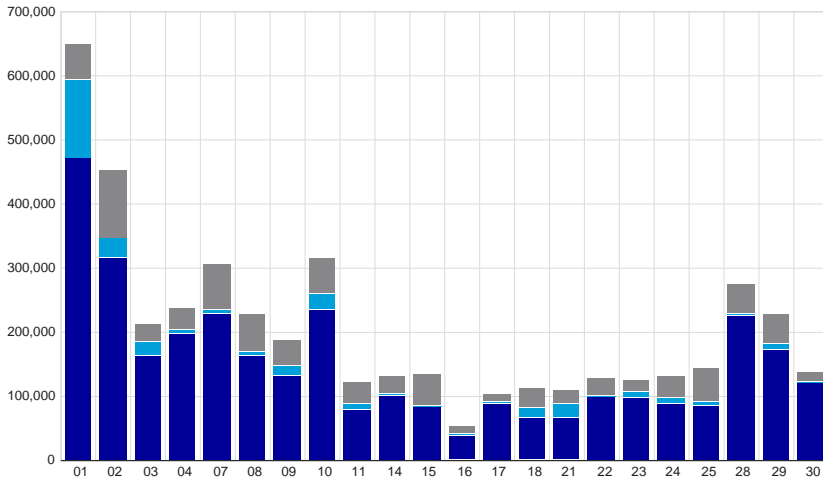
Momentum



Momentum is an indicator of the direction and rate of change in stock price movements. It is calculated as the difference between the current and previous price of a stock, divided by the previous price. It can be computed hourly, daily, weekly, or monthly. In a diagram, the momentum of a stock is usually depicted as a curve that fluctuates around a zero line. If the curve crosses the zero line from below, this is understood as a signal to buy. If the momentum curve crosses the zero line from above, it is considered to be a signal to sell.



Order book turnover (€) in September 2015

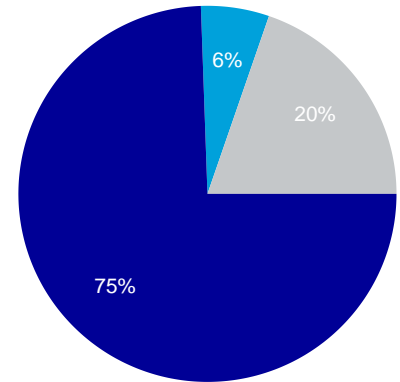
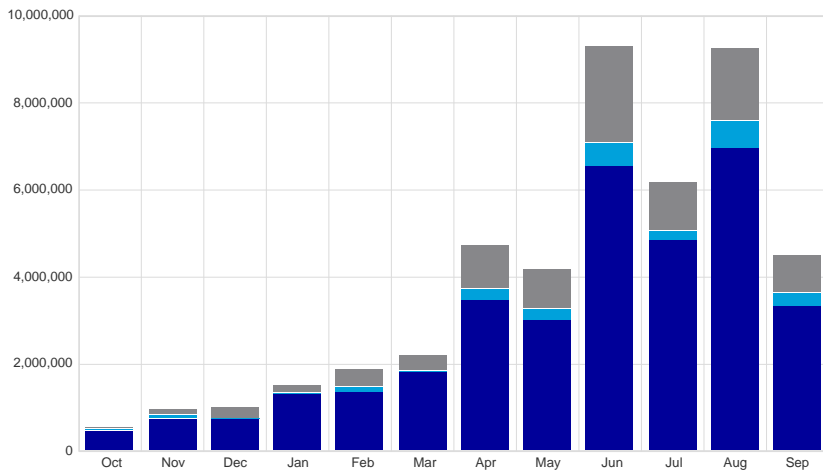


	Xetra	Frankfurt	Other	Total
Volume (€)	3,316,107	329,761	886,796	4,532,664
%	73.16%	7.28%	19.56%	100.00%
average*	150,732	14,989	40,309	206,030
Volume (Units)	248,438	24,067	66,825	339,330
%	73.21%	7.09%	19.69%	100.00%
average*	11,293	1,094	3,038	15,424

* daily average based on 22 trading days at Xetra

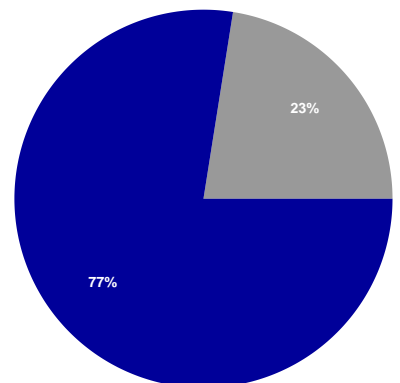
■ Xetra ■ Frankfurt ■ Other

Order book turnover (€) in the last 12 months



■ Xetra ■ Frankfurt ■ Other

Total turnover (€) on Xetra and Frankfurt by member in September 2015 (multi counted)



■ Domestic ■ Foreign



Shareholder structure end of September 2015

There is no information about non free float shareholders available. Therefore, a 100% free float is used for index calculation.

Free float structure end of September 2015

There is no information about free float shareholders available.

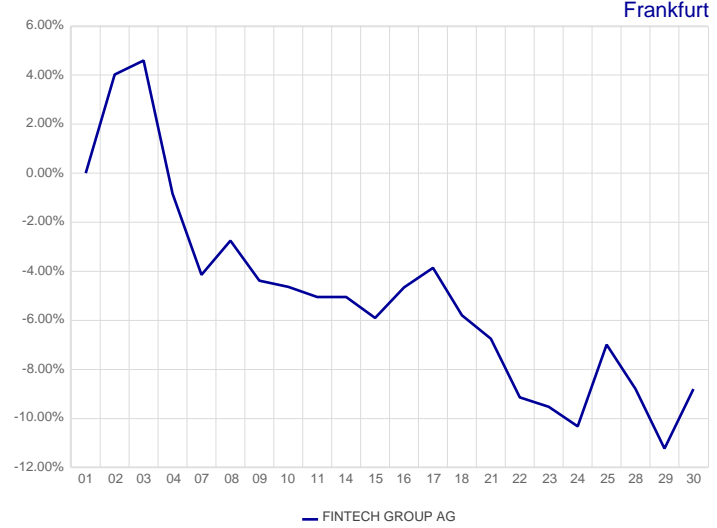
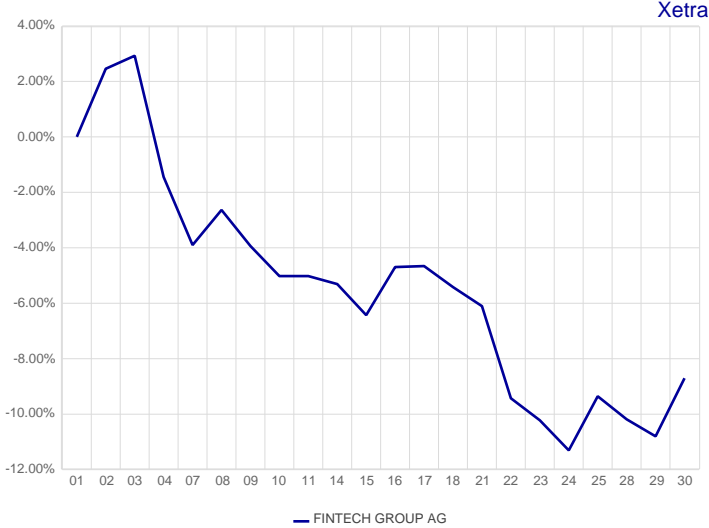
We are using the number of shares and the holdings of particular investors for the calculation of our equity indices and are concerned to keep these data as accurate and up-to-date as possible. In case you have further questions, new information or corrections with respect to issued capital or shareholder structure please contact stoxindex@stox.com.



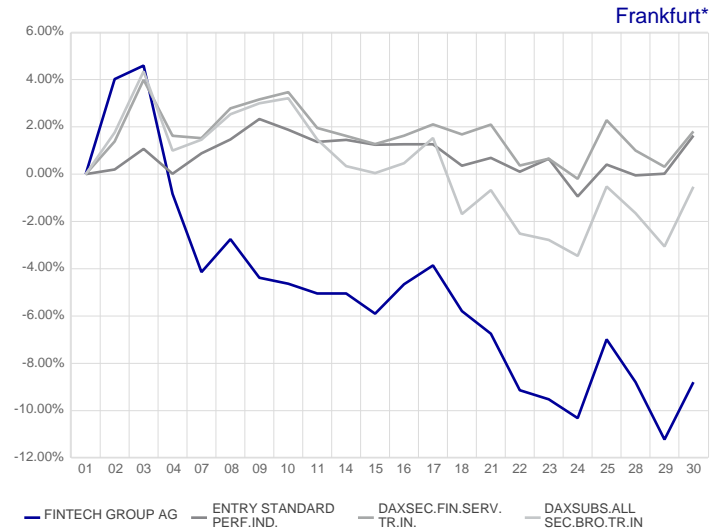
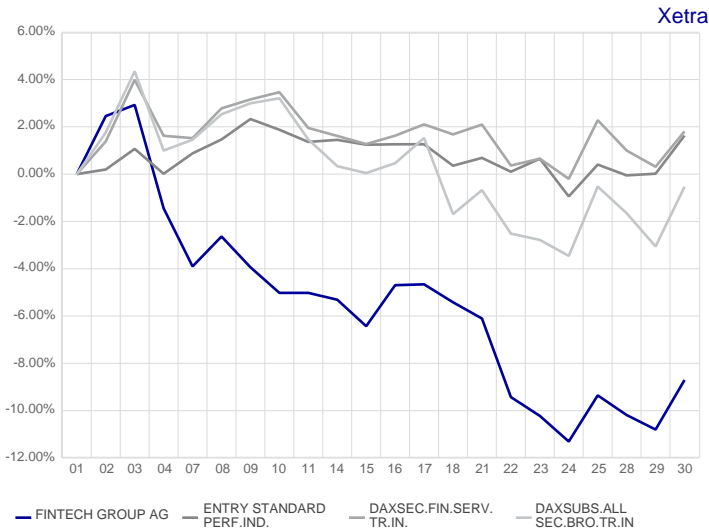
Price Performance Comparison

Stock Report September 2015

Peer group comparison (performance on adjusted mixed prices)



Index comparison (performance on adjusted mixed and index close prices)



*Index values are based on Xetra prices

You can define up to three ISINs as peer group and up to three Indices both out of the Deutsche Börse universe for these performance comparisons. If you want to modify the peer group or index selection, please do not hesitate to contact the Issuer&Primary Market Relations hotline via e-mail: StockReport@deutsche-boerse.com or via phone +49-69-211-1-88 88.

The issuer services hotline will be delighted to assist you on trading days from 9.00 am CET till 5.00 pm CET.

Index weighting

Last in Month	Market Cap	Weight
DAX INTER. MID 100 TR EUR	204.83	0.16%
DAXSEC. ALL FIN.SERV.TR	204.83	0.28%
DAXSUB.ALL SEC.BRO.TR	204.83	1.22%
ENTRY ALL SHARE P-IN.	13.87	0.62%
ENTRY STANDARD PERF.IND.	17.95	3.18%

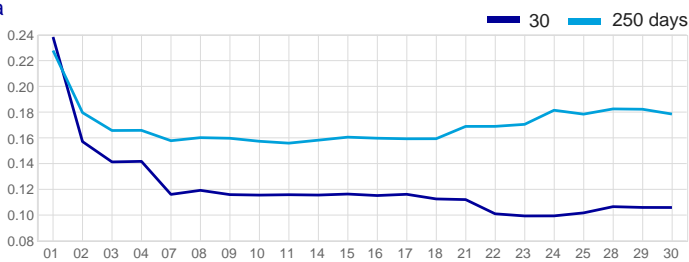
Index ranking (12 months)

There is no ranking information available for this instrument.

Technical indicators

ENTRY ALL SHARE P-IN.

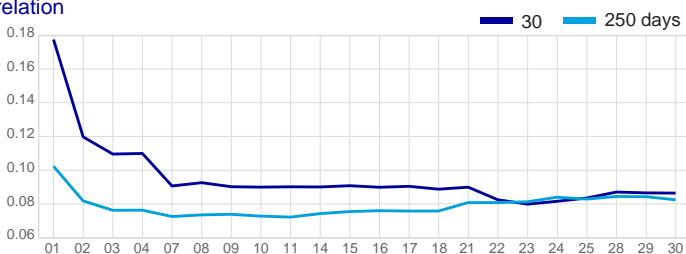
Beta



The Beta describes the correlated volatility of the security in relation to the volatility of the index over a period of time (30 or 250 days).

- $\beta < 0$ The security generally moves in the opposite direction as compared to the index
- $\beta = 0$ Movement is uncorrelated with the movement of the index
- $0 < \beta < 1$ Movement is generally in the same direction as, but less than the movement of the index
- $\beta = 1$ Movement is generally in the same direction and amount as the movement of the index
- $\beta > 1$ Movement is generally in the same direction as, but more than the movement of the index

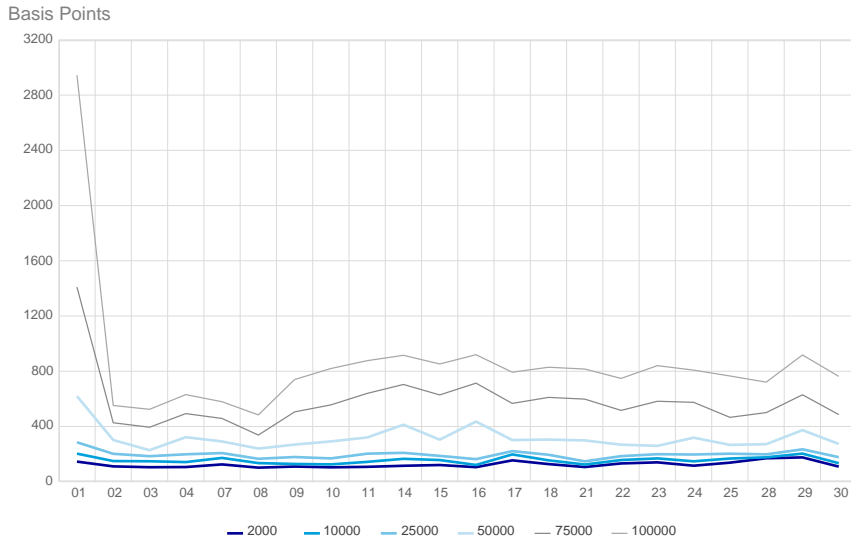
Correlation



Correlation is a statistical measure that describes how the security moves in relation to the index over a period of time (30 or 250 days).

- $C = 1$ Perfect positive correlation implies that the security will move in lockstep, in the same direction
- $C = 0$ The movements of the security and the index are said to have no correlation; they are completely random.
- $C = -1$ Perfect negative correlation means that the security moves will move in the opposite direction of the index

XLM - volume class up to 100,000



Measurement for the liquidity of a security in the order book of the electronic trading system Xetra on the basis of the implicit transaction costs.

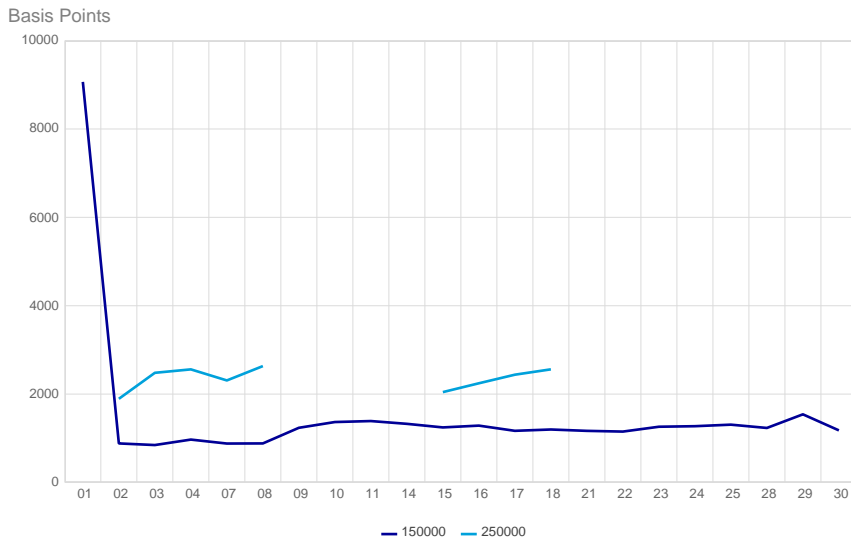
As a rule, the more liquid a market/transaction, the lower is its implicit transaction cost. The Xetra Liquidity Measure (XLM) measures liquidity and expresses the implicit transaction costs as a single figure. These costs are calculated as average of a minute-by-minute created hypothetical order without limit. At each point in time a theoretical, fair price is set, which ranges exactly between the best bid and the best ask order. The difference between this average price and the average execution price of the hypothetical order amounts to the implicit transaction costs.

The XLM is presented in basis points (100 basis point = 1 percent) in relation to the Market Impact costs of a certain order volume for the round trip (opening and closing a position in one point of time). For example, a XLM of 10 basis points and EUR 100,000 order volume means the Market Impact costs of buying and selling a certain instrument are equal to EUR 100. Deutsche Börse provides the Xetra Top Liquids on daily figures for the last trading day.

The larger the difference, and thus the XLM, the lower is the liquidity of a security.

For more detailed information see also on www.xetra.com > trading&clearing > Xetra > Xetra Liquidity Measure

XLM - volume class between 100,000 and 2,000,000



Should you have questions concerning these data, please do not hesitate to contact the listing center hotline via e-mail: StockReport@deutsche-boerse.com or via phone +49-69-211-1-88 88.

The Issuer&Primary Market Relations hotline will be delighted to assist you on trading days from 9.00 am CET till 5.00 pm CET.

Your investor relations department should check the information on shareholder structure and make corrections to the data where necessary. We are using the number of shares and the holdings of particular investors for the calculation of our equity indices and are concerned to keep these data as accurate and up-to-date as possible. In case you have further questions, new information or corrections with respect to issued capital or shareholder structure please contact stoxindex@stox.com.

Explanation

Adjusted Price	Is the price after it has been adjusted for exogenous influences, such as price-relevant changes to capital, in order to achieve historical comparability.
Designated Sponsor	Banks or other financial service providers who furnish binding quotes in electronic trading for the purchase or sale of stocks, thereby offsetting temporary imbalances between supply and demand for less liquid stocks.
Domestic/Foreign	Domestic: Total turnover by members with home country Germany. Foreign: Total turnover by members with home country outside Germany.
Frankfurt	Frankfurt trading combines the advantages of electronic trading with the personal support and knowledge of the Frankfurt Specialists.
Free Float	Irrespective of the size of a shareholding, the definition of free float includes all shareholdings held by asset managers and trust companies, investment funds and pension funds, holding companies; as well as capital investment companies or foreign investment companies in their respective special fund assets with the purpose of pursuing short-term investment strategies.
Indices	Are overviews of the levels of various Deutsche Börse AG indices at the end of the various trading days of the reporting month.
Order Book Turnover	Is the stock-exchange turnover price on Xetra and on Frankfurt. All transactions are taken into account for which an official price was determined in Deutsche Börse AG's trading systems. The volumes traded are calculated in single counting.
Other Exchanges	The following stock exchanges are included: Bayerische Börse, Börse Berlin, Börse Düsseldorf, Börse Hamburg, Börse Hannover, Börse Stuttgart, Tradegate
Performance	Is the percentage change of daily close prices.

For more information please have a look on the Deutsche Börse glossary on www.deutsche-boerse.com > About Us > Services > Know-how > Stock Exchange A-Z

Legal Disclaimer

Deutsche Börse AG (DBAG) and Eurex Frankfurt AG are corporate entities and are registered under German law. Eurex Zürich AG is a corporate entity and is registered under Swiss law. Eurex Frankfurt AG (Eurex) is the administrating and operating institution of Eurex Deutschland. Eurex Deutschland and Eurex Zürich AG are in the following referred to as the "Eurex Exchanges".

All intellectual property, proprietary and other rights and interests in this publication and the subject matter hereof (other than certain trademarks and service marks listed below) are owned by DBAG and its affiliates and subsidiaries including, without limitation, all patent, registered design, copyright, trademark and service mark rights. While reasonable care has been taken in the preparation of this publication to provide details that are accurate and not misleading at the time of publication DBAG as well as the Eurex Exchanges and their respective servants and agents (a) do not make any representations or warranties regarding the information contained herein, whether express or implied, including without limitation any implied warranty of merchantability or fitness for a particular purpose or any warranty with respect to the accuracy, correctness, quality, completeness or timeliness of such information, and (b) shall not be responsible or liable for any third party's use of any information contained herein under any circumstances, including, without limitation, in connection with actual trading or otherwise or for any errors or omissions contained in this publication.

This publication is published for information purposes only and shall not constitute investment advice respectively does not constitute an offer, solicitation or recommendation to acquire or dispose of any investment or to engage in any other transaction. This publication is not intended for solicitation purposes but only for use as general information. All descriptions, examples and calculations contained in this publication are for illustrative purposes only.

Trademarks and Service Marks

DAX®, Eurex®, FWB®, MDAX®, SDAX®, TecDAX® and Xetra® are registered trademarks of DBAG.

The STOXX® indexes, the data included therein and the trademarks used in the index names are the intellectual property of STOXX Limited and/or its licensors. Eurex derivatives based on the STOXX® indexes are in no way sponsored, endorsed, sold or promoted by STOXX and its licensors and neither STOXX nor its licensors shall have any liability with respect thereto.

The names of other companies and third party products may be trademarks or service marks of their respective owners.